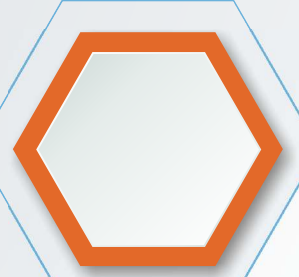
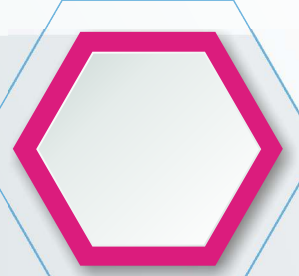


# Scale up the possibilities with the new HP-5000



euroset 2025C



P-200IP



P-210IP



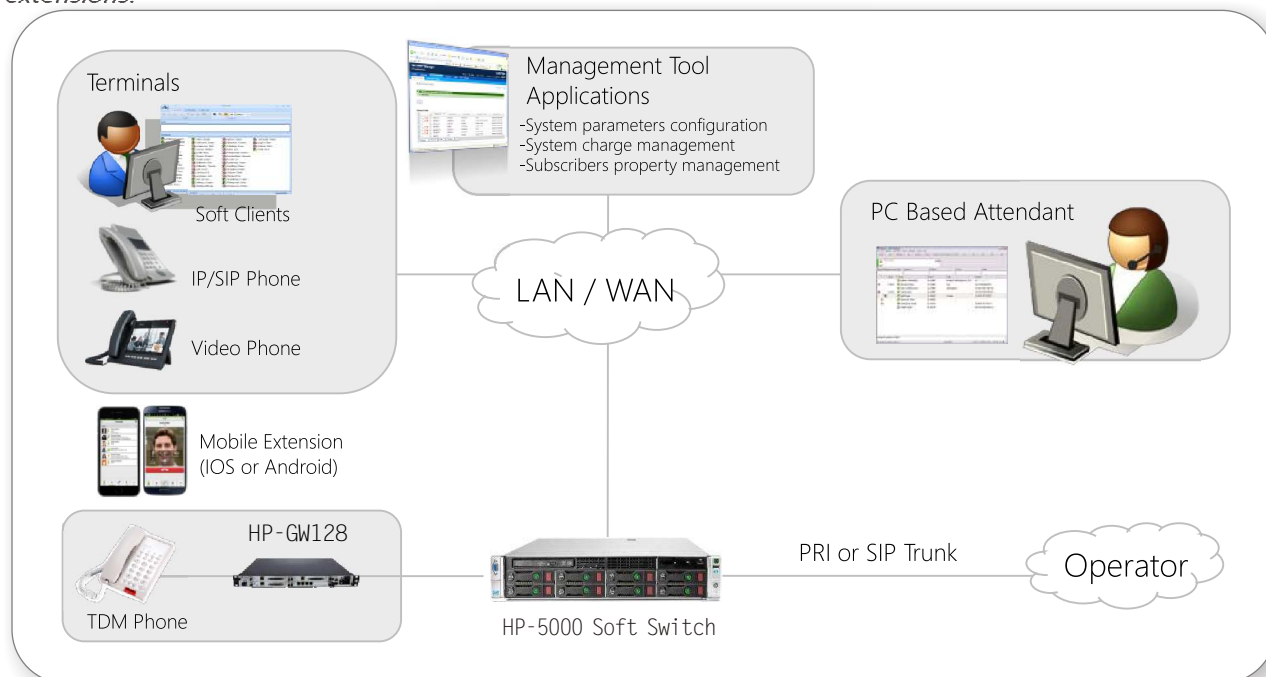
P-220IP



P-300IP

## Scale up the possibilities with the new HP-5000

Designed to adapt to your growing business needs, the new **HP-5000** is an effective and dynamic soft switch offering industry standard redundancy and resiliency on every front. With complete adaptability, state of the art build and cost effective operations, the HP-5000 offers you complete technical flexibility with Analog & SIP extensions.



- Industry standard Server based solution
- IP @ core
- Operating system - CentOS 6.8 Linux
- Hot standby functionality
- Highly scalable, up-to 5000 Analog / SIP extensions
- Modular high density gateway to support Analog extensions
- 128 Analog extensions in 1U size gateway
- Multiple choices for PSTN gateways
- Built in Voicemail with Unified Messaging and Voice Recording
- Built in Interactive Voice Response System
- PC based Operator Console
- Point to point Video call support using H.261, H.263, H.263+, H.264, VP8, Vp9

The HP-5000 is the optimal solution to your needs providing robust enterprise communication possibilities, advanced tools and complete customizations to your business operations.

## HP-5000 Variants

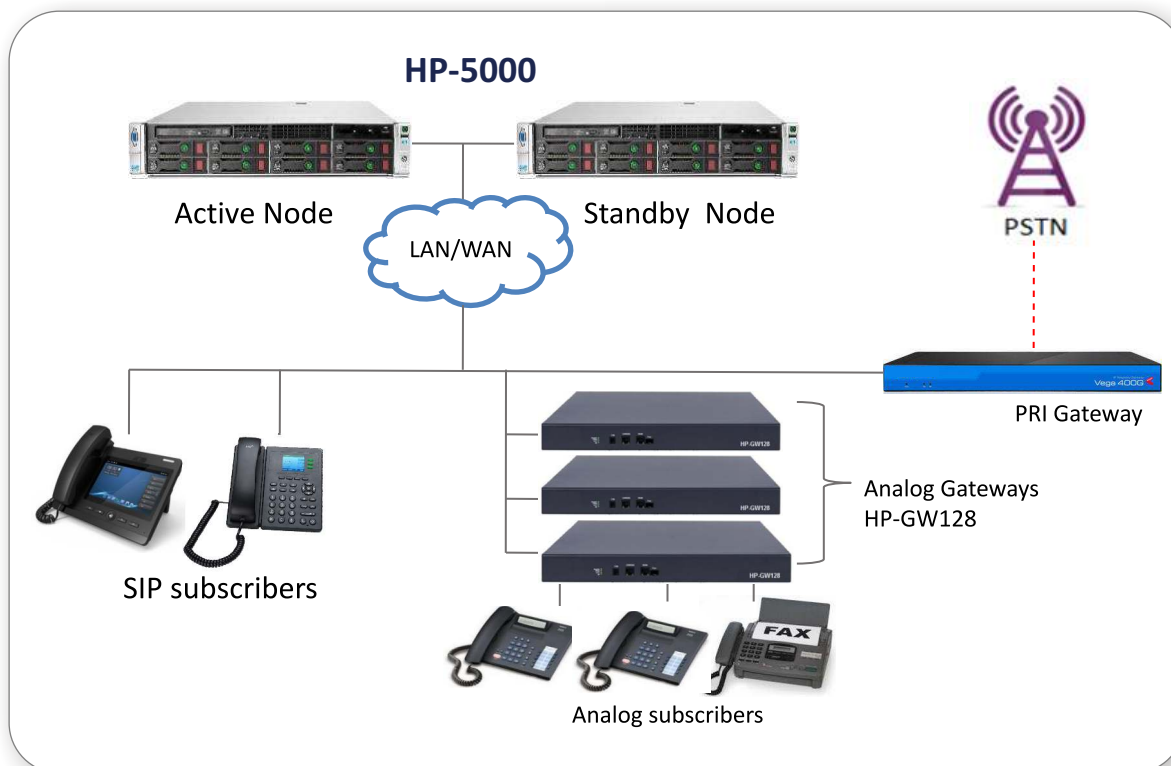
HP-5000 is available in 3 different variants depending upon the customer requirement.

HP-5000 Variant	Small	Medium	Large
Maximum Number of Subscribers	500	2,000	5,000
Hot Stand by Redundancy	Yes	Yes	Yes
Maximum number of PRI ports (1 port = 30 Channels)	16	16	16
Maximum Number of VoIP Trunk Channel	500	2,000	5,000
Maximum Number of Voice Mail users	500	2,000	5,000
Maximum Number of Voice Recording users	500	2,000	5,000
T.38/T.30 Fax support	Yes	Yes	Yes

## Typical Deployment Scenarios

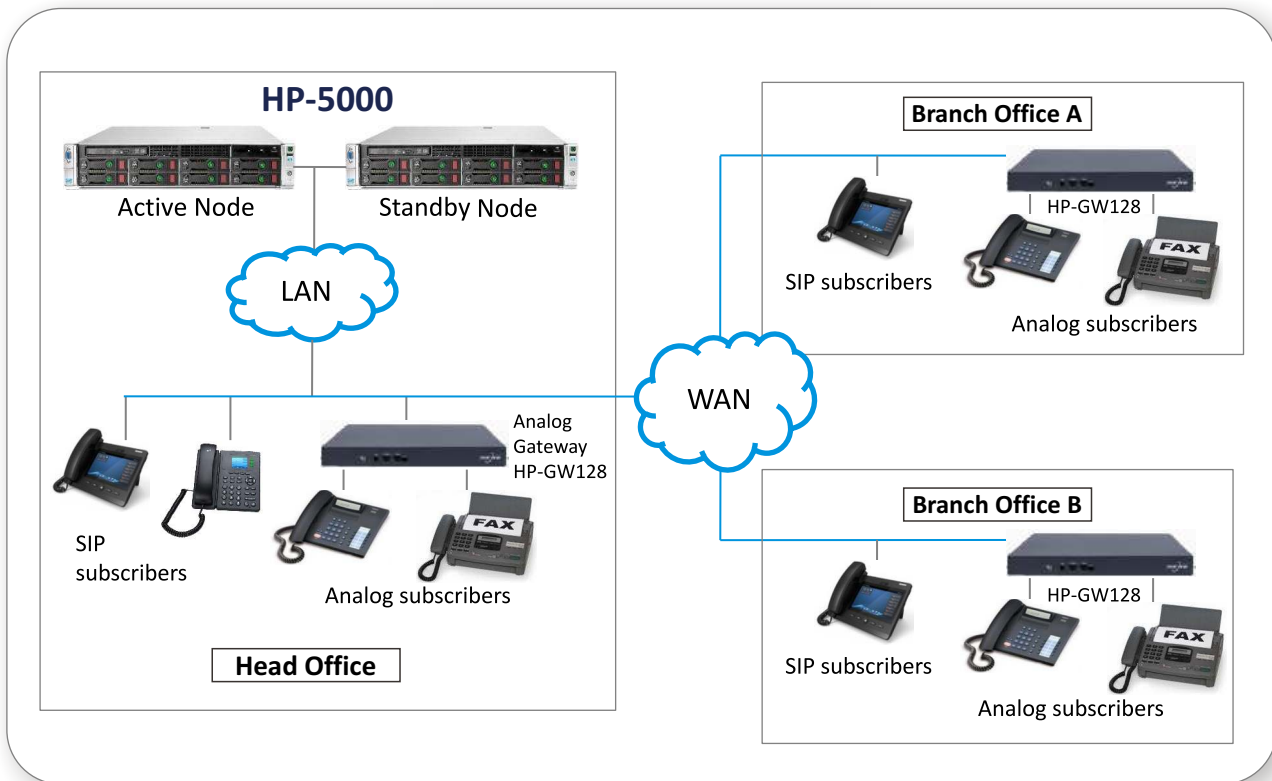
HP-5000 supports Server-Gateway architecture. Typical deployment scenarios of HP-5000 can be seen as below.

### a. Stand-alone architecture



In a stand-alone architecture it would be single node system. HP-5000 could be deployed as Simplex or as a Duplex in a hot standby mode.

## b. Distributed architecture

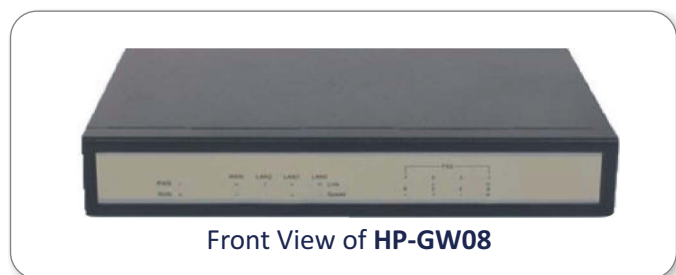


Distributed architecture helps enterprise customers to connect flawlessly who have geographically separated offices distributed over IP infrastructure.

## Analog Extension Gateway

- HP-5000 supports Analog extensions via Analog gateways (FXS) called as HP-GW

series. It's a cost-effective SIP based Analog (FXS) gateway offering high-quality Voice, Fax and Modem over IP networks for small and medium sized remote branches behind HP-5000



Front View of HP-GW08

- There are two types of gateways supported namely HP-GW08 and HP-GW128

## HP-GW08

HP-GW08 is 8 port analog gateway with comprehensive voice codec support.

### Key Features:

- Caller ID
- Flexible dial plans
- Support for 4 modes of fax : T.38, Pass-Through, Modem, Adaptive
- 10/100 Mbps WAN port
- Primary & Secondary SIP Server profile
- LAN ports for local administration
- In-built NAT router.
- Support for advanced telephony features
- QoS for high priority VoIP traffic
- Remotely Manageable and upgradeable via the IP Provision System



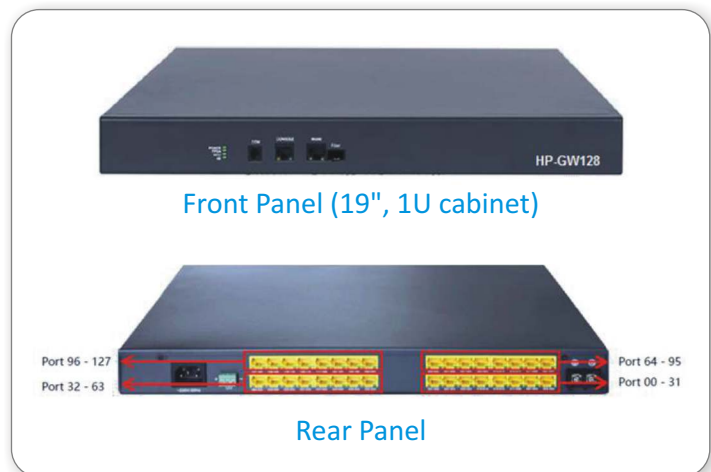
Audio Specifications of HP-GW08	Network Specifications of HP-GW08
<ul style="list-style-type: none"><li>• G.711A/U law, G.723.1, G.729AB, iLBC, AMR</li></ul>	<ul style="list-style-type: none"><li>• SIP V2.0, SDP, REFER</li></ul>
<ul style="list-style-type: none"><li>• Comfortable Noise Generation (CNG)</li></ul>	<ul style="list-style-type: none"><li>• RTP/RTCP</li></ul>
<ul style="list-style-type: none"><li>• Voice Activity Detection (VAD)</li></ul>	<ul style="list-style-type: none"><li>• STUN, SNTP, DNS, NTP</li></ul>
<ul style="list-style-type: none"><li>• Echo Cancellation (G.168)</li></ul>	<ul style="list-style-type: none"><li>• ARP/RARP (RFC 826/903)</li></ul>
<ul style="list-style-type: none"><li>• Adaptive Dynamic Jitter Buffer</li></ul>	<ul style="list-style-type: none"><li>• DHCP/PPPoE</li></ul>
<ul style="list-style-type: none"><li>• Voice and fax gain control</li></ul>	<ul style="list-style-type: none"><li>• TFTP/HTTP/HTTPS</li></ul>
<ul style="list-style-type: none"><li>• DTMF Mode: Signal, RFC2833, INBAND</li></ul>	<ul style="list-style-type: none"><li>• VLAN 802.1P/802.1Q</li></ul>
	<ul style="list-style-type: none"><li>• Backup Server and Proxy support</li></ul>
	<ul style="list-style-type: none"><li>• SNMP support</li></ul>
	<ul style="list-style-type: none"><li>• Diagnostics (debug through Syslog Event Notice)</li></ul>
	<ul style="list-style-type: none"><li>• Debug in real time by Telnet</li></ul>

## HP-GW128

HP-GW128 is another cost effective, high density analog extension gateway which can be connected behind HP-5000.

### Key Features:

- Cost-effective, High density SIP based Analog (FXS) gateway
- High-quality Voice, Fax and Modem over IP
- Standard 1U cabinet structure
- Scalable from 32 to 128 FXS ports (in multiples of 32 ports)
- Survivability option for subscribers
- Multiple gateways can be stacked together (Physical Stack)
- Comprehensive Quality of Service (QoS) mechanisms
- Multiple voice codec support
- Voice Activity Detection (VAD)
- Comfort Noise Generation (CNG)
- Dynamic adjustment of Jitter Buffer
- Echo cancellation in compliance with ITU-T G.165 / G.168



**Note:** Multiple HP-GW128s can be stacked together to increase the number of FXS ports more than 128. (Physical Stack)

### HP-GW128 Specifications

Protocol	SIP/ RFC3261, SDP / RFC2327, RTP/RTCP, MGCP, H.248
Voice Coding	G.711A/U, G.723, G.729
Voice Enhancement	Echo cancellation / Dynamic adjustment of jitter buffer VAD, CNG, lost-packet compensation
DTMF Transmission Standard	Inband Audio
	Outband over RTP (RFC2833) / Outband over SIP Info
Network Characteristics	Static IP, DHCP, PPPoE, 802.1Q VLAN,
Web configuration management	Configuration Management, supports Tr069
Network Ports	1 x WAN port, 1 x LAN port (10/100)
Power Supply	AC power, input at 100~240V, frequency at 48~60Hz
	DC power, input at 12V
Power Consumption	<100W (full configuration)
Maximum Distance	3 Km



## HP-5000

### Sailent Feature:

- Call transfer (Blind & Supervised)
- Call back on busy
- Call forward - Busy
- Directed Call Pickup
- 3 party Conference
- Silent Monitoring
- Emergency Override & disconnect
- Wake up call
- DID/DOD
- Calling Time restriction
- Hunting group (Linear/Circular)
- Call Hold / Reconnect
- Call forward - No answer
- Call forward Unconditional
- Group call pickup
- Do not disturb
- Executive override
- Forced disconnection of call
- Call block - selective numbers
- Toll call restriction
- Parallel Ringing
- NTP service

### Conference Feature:

- HP-5000 supports an in built conference solution with maximum 64 conference resources. The participants can be internal Analog subscribers, SIP subscribers or external PSTN users.
- There are 2 types of conferences that are supported
- **Ad-Hoc conference**

Any user in HP-5000 can initiate an Ad-Hoc conference at any time during a call using feature code. User can go on adding additional participants as per need.

- **Meet-me conference**

Meet-me conference bridge is an in-built functionality of HP-5000 system. A meeting can be established using web based management of HP-5000 with Meeting ID and password.

All the participants can dial in to such conference bridge using these ID and password.

**Note:** Maximum 64 parties are supported in a Single conference.

## • UMR (Unified messaging and recording) system

- HP-5000 supports Voicemail & recording for all members as system features.
- It supports up to 1000 simultaneous lines for Voicemail & voice recording.
- The recordings would be saved in wav format (G711) which supports more than 16000 hours of recording.
- UMR is highly secure and reliable.
- It activates message waiting indication on base SIP phone along with prompt to indicate that there is a voice message for the subscriber.
- Voice Recording also gives statistics about
  - Calling number
  - Called number
  - Recording time
  - Recording duration
  - Recording channel number
  - UMR allows remote management through LAN & WAN to view, listen, delete, back-up and query of Voice messages and Voice recordings.
- Voicemail would be available to the entire subscriber and each subscriber can access his mailbox via his telephone.
- It is also possible to avail the voicemail on the email of user as an option so that such subscriber can access his voicemail while on the go.

## Attendant Console

HP-5000 supports and enhanced operator console which is a PC based application which helps to handle multiple incoming calls from internal subscribers as well as outside callers.

Calls can be handled by a telephone instrument synced with Operator Console GUI based portal.



## HP-5000 server specifications

HP-5000 can be installed on industry standard servers only. VMware support is planned for further release. There are three types of deployments

HP-5000 Variants	Small	Medium	Large
CPU	Intel G450 or higher	Intel E3 1230V5 or higher	Intel E5 2630V4 or higher
Memory	8 GB	16 GB	32 GB
Hard Disk capacity	1 TB	1 TB	1 TB



## Sales Offices:

### Ahmedabad

409, Pinnacle Business Park,  
Corporate Road,  
Praladnagar,  
Ahmedabad - 380015  
Tel.: +91-79-4040 7500

### Bengaluru

No. 92-93, 1<sup>st</sup> Floor,  
Garden Citi Plaza, Domlur,  
Koramangala Intermediate  
Ring Road, Amar Jyothi Layout,  
Bengaluru - 560071  
Tel.: +91-80-4361 8000

### Bhopal

2<sup>nd</sup> Floor, Gomti-Villa,  
273, Zone-II, M. P. Nagar,  
Bhopal - 462011  
Tel.: +91-75-5400 4676

### Bhubaneswar

Plot No.382, 2<sup>nd</sup> Floor  
Bhoi Nagar, Behind Sahid  
Nagar Police Station,  
Bhubaneswar - 751022  
Mob.: +91-943700 4318

### Chandigarh

C/o Regus Business Centre,  
SCO 54-56, 3<sup>rd</sup> Floor,  
Sector 17A,  
Chandigarh - 160017  
Mob.: +91-99888 99421

### Chennai

Unit No.2, West wing,  
4<sup>th</sup> Floor, Maalavika Centre,  
No.144-145 Kodambakkam  
High Road, Nungambakkam,  
Chennai - 600 034  
Tel.: +91 44 2833 4190

### Cochin

KG Oxford Business Centre,  
No 39/4609, 4<sup>th</sup> Floor C,  
Sree Kandath Road,  
Ravipuram, Cochin - 682016  
Tel.: +91-484-404 4260

### Delhi

A-25, Mohan Co-operative  
Industrial Estate, Mathura  
Road, New Delhi - 110044  
Tel.: +91-11-4288 5508

### Gurgaon

4<sup>th</sup> floor B-Block, Times Square  
Building, Sushant Lok Phase 1,  
Gurgaon – 122001, Haryana  
Tel.: +91-11-4288 5508

### Hyderabad

H. No. 1-65/2/40 & 41 (P)  
Plot No: 68, 1<sup>st</sup> Floor, A1 Towers,  
Sri Rama Colony, Kavuri Hills  
Phase 1, Madhapur,  
Hyderabad – 500 033  
Tel.: +91 40 4448 2500

### Jaipur

605, 6<sup>th</sup> Floor, Green House,  
Ashok Marg, C-Scheme,  
Jaipur - 302001  
Mob.: +91-96549 10792  
Mob.: +91-96729 91967

### Jammu

Lane No-1, R K Vihar Behind,  
Rama Krishn Ashram,  
Udhewalla, Bohri,  
Jammu-180002  
Mob.: +91-99888 99421

### Kolkata

12<sup>th</sup> Floor, Unit No.3, PS Srijan  
Corporate Park Tower-1,  
Plot No. G-2, Block EP & GP,  
Sector-V, Bidhannagar,  
Salt Lake Electronics Complex,  
Kolkata – 700091  
Tel.: +91-33-4016 5100

### Lucknow

C/O. Regus Infinity Business  
Hubs, 4<sup>th</sup> Floor, Halwasiya  
Court, Hazratganj,  
Lucknow - 226001, U.P.  
Mob.: +91-77048 09251

### Mumbai

Unit No. 901, 9<sup>th</sup> Floor,  
Lodha Supremus, Wing - E,  
I Think Techno Campus,  
Kanjurmarg (East),  
Mumbai - 400 042  
Tel.: +91 22 4154 7000

### Mahape

EL - 19, MIDC, TTC Industrial  
Area, Mahape, Near Nelco,  
Navi Mumbai - 400710

### Pune

Office No.2, 2nd Floor  
Patil & ABK House, Pakharbaug  
Society, Ram Nagar, Bavdhan,  
Pune, Maharashtra 411021  
Tel.: +91-20-2291 6060

### Vadodara

A/413, Atlantis, B/s. Central  
Square, At Sarabhai Campus,  
Nr. Genda Circle,  
Vadodara - 390023  
Tel.: +91-265-232 3155

### Visakhapatnam

Visakha Business Centre, Cabin  
S-9, 46-19-5, Manda Vari Street,  
Behind Big Bazar, Dondaparthi,  
Visakhapatnam - 530016  
Mob.: +91-99493 53919

### Nagpur

1st Floor, 6-A, Matruchaya,  
Modern Society, Chhatrapati  
Square, Wardha Road,  
Nagpur - 440015  
Tel.: +91 98601 51112

### Aurangabad

Mob.: +91-77200 25100

### Coimbatore

Mob.: +91-95142 01091

### Dehradun

Mob.: +91-95680 10446

### Goa

Mob.: +91-77559 23035

### Guwahati

Mob.: +91-98640 16888

### Kota

Mob.: +91-96549 10792

### Madurai

Mob.: +91-95142 01091

### Patna

Mob.: +91-76541 90694

### Raipur

Mob.: +91-98260 10263

### Ranchi

Mob.: +91-76541 90694

### Vijayawada

Tel.: +91-40-4448 2500

### Trichy

Mob.: +91-95142 01091

Contact us: 011-4288 5508

[www.progilitytech.com](http://www.progilitytech.com)

**Corporate Head Office:** Unit No. 1001, 10<sup>th</sup> Floor, Lodha Supremus, Wing - E, I Think Techno Campus,  
Kanjurmarg (East), Mumbai - 400 042, Maharashtra, India. Tel.: +91-22-4154 7000,  
Fax: +91-22-4154 7222 Email us - [india@progilitytech.com](mailto:india@progilitytech.com)